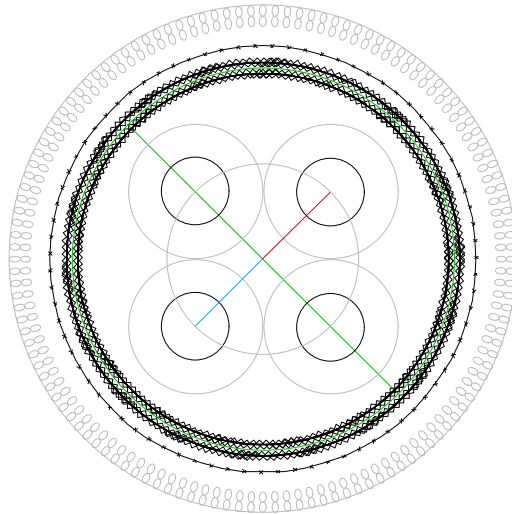


# EVENT RCA

[Mk.II]



AD COPY + SPECIFICATIONS

11 | 2015



# EVENT RCA PHOTOS

ZU AUDIO EVENT RCA Mk.II [REV-A] INTERCONNECT CABLE AD COPY + SPEC'S





# EVENT RCA PHOTOS

ZU AUDIO EVENT RCA Mk.II [REV-A] INTERCONNECT CABLE AD COPY + SPEC'S





# EVENT RCA AD COPY

ZU AUDIO EVENT RCA Mk.II [REV-A] INTERCONNECT CABLE AD COPY + SPEC'S

## AD COPY

Event RCA Mk.II is our top model and defines the apex of value in high-end audio RCA-type cabling. They have the widest bandwidth, with the least distortion, with the highest shielding and the tightest left/right channel tolerances in the business.

Hear your music again for the first time... hear things you've never heard before... more life-like, making your system even better than real life.... Seriously though, Event RCA Mk.II is special and if you're in the market for top-shelf interconnects you really should put these new Mk.II Event RCA cables on your list—we back 'em up with the easiest trial and refund in audio, our no-hassle 60-days satisfaction guarantee so you can try 'em, with your own gear, with your music and without sales pressure so you can know for yourself.

Materials used in Event RCA are similar to our competitor's much more expensive top offerings; the use of the best solid core silver wire and virgin un-dyed Teflon dielectrics for example, as well as the super-duper WBT NextGen RCA plugs. But these are just the materials supporting the magic—the magic of design is not in the stuff, it's in the electrodynamics! That's where Event is different; we have the vision of sound, we know the engineering and we manufacture our cables in-house.

Example: Event RCA Mk.II's handling of left/right channels and channel matching, the electrodynamics design ensures the two critical left/right stereo channels match exactly and even share dielectric space. This significantly reduces the most influential component, parallel capacitance, and guarantees uniform response and shielding from external environmental concerns such as electromagnetic and vibrational radiation. In addition to better sound, the design also lets you run longer lengths without the unfavorable side effects.

The impact Event RCA can have on your playback enjoyment is potentially as significant as your last new amp or DAC upgrade—and likely at far less expense than either. Take us up on our 60-days satisfaction guarantee, know for yourself.

*If Event Mk.II does not make a difference in your system,  
sell your system*



# EVENT RCA AD COPY

ZU AUDIO EVENT RCA Mk.II [REV-A] INTERCONNECT CABLE AD COPY + SPEC'S

## MORE AD COPY

Event RCA Mk.II [mark-two] is designed for single-ended, high-impedance, line-level stereo applications and is a single-ended but quasi-balanced two-channel cable with virtual ground between the two channels. It gives the best possible protection from RF noise, the widest bandwidth, and the most convincing transmission of stereophonic content—left and right channels being perfectly matched with signal of each channel propagating in the same dielectric space. While the dielectric space is shared between both left and right, each is positioned so one cannot see or crosstalk to the other. This elimination of crosstalk and reduction of parallel capacitance helps ensure the two-channel-stereo signals remain pristine, independent, high conductance, and yet have low parallel capacitance.

A PTFE film skins the conductors of signal and return and is the structure that sets the cables characteristic impedances; air gaps are formed and fill the space between. The Teflon® material is used next to the conductors of signal and return. Teflon® is used for its very low dielectric constant, no other commercially available solid has as good a dielectric behavior as Teflon based films.

Conductor used in Event RCA Mk.II is the highest purity North American mined, smelted, refined and drawn silver—signal and return. How this pure material is used within the E&M model yields all of the benefits of silver but without the cheaper off-the-shelf stuff's glare, lean tone, or edginess. In fact, Event RCA Mk.II is a very relaxed and harmonically dense, life-like sounding cable. We think this is only achieved when emphasis is placed on the E&M architecture, then considering the materials to serve the electrodynamics, then loop back and spiral down to the target sound and price. Once architecture of the magnetic and electric is finalized, and within the value target, we then consider terminals and termination practices, repeating this until satisfied.

What is the difference between the RCA and XLR cables, save for the connectors? A question we occasionally get. Well, they are quite different despite looking the same. RCA [single-ended typically] signals and the corresponding cable behave very differently from XLR and we have addressed and designed for the unique features of both. Event XLR Mk.II is balanced and places the left signal in the virtual ground of the right, and vice versa.

The result our hard work and excellent, ever advancing craftsmanship is a state-of-the-art performing RCA cable that is highly shielded, easy to work with, can be ran for long lengths, and is not totally insane in price [relative].

*Ensure pristine and perfectly matched stereo two-channel transmission in your system—Event RCA Mk.II*



# EVENT RCA AD COPY

ZU AUDIO EVENT RCA Mk.II [REV-A] INTERCONNECT CABLE AD COPY + SPEC'S

## EVENT RCA MK.II FEATURES & BENEFITS

- Zu/Gore® shared dielectric dual signal single-ended quasi-balanced electrodynamic geometry for low electromagnetic interference susceptibility and near perfect left/right measures and behavior. This ensures the highest level of stereophonic realism and reduces reactance so signal remains unaltered even in long lengths.
- Dense electric and magnetic signature, as well as the cables physical dimensions, further guard against RF and other sources of noise and allow for small and easy handling quality.
- The very low, uniform and square reactance of Event RCA Mk.II facilitates long runs without bandwidth loss or phase issues.
- Super consistent impedance characteristics of Event RCA Mk.II reduce standing waves and contribute to the stable propagation of intelligence in short or long runs.
- Zu Event RCA Mk.II has no DC offset like in coaxial or asymmetric designs and features perfect symmetry between left and right channels. The identical relationship between channels guarantees the highest possible recreation of dimension, stereo, density and tone.
- Virgin clear PTFE (Teflon®) + air dielectric with identical electrodynamic relationships provide a very low dielectric constant and exceptionally low dissipation factor—features that improve bandwidth, phase relations, and overall musical resolution.
- WBT NextGen RCA plugs as they are well designed and mate well with the Event RCA Mk.II cable.
- Designed and made by Zu Audio in Ogden, Utah—USA.

## MAINTENANCE

No maintenance is required for the Event RCA cable or its connectors. However, anytime you are making an electrical connection make it a habit to inspect the contacts and clean them if they are tarnished or dirty, Cape Cod™ polish is one of our favorites.

## BURN-IN

Event RCA interconnect cable requires a good bit of play before complete burn-in is reached, roughly 400 hours—lots of Teflon® equals slow burn-in. We do not recommend any burn-in devices or special recordings. We do recommend music you enjoy, preferably upbeat full spectrum recordings: rock, roots, full orchestra, big band.... For the possible how and whys about burn-in please see our [Answers](#) section.



# EVENT RCA AD COPY

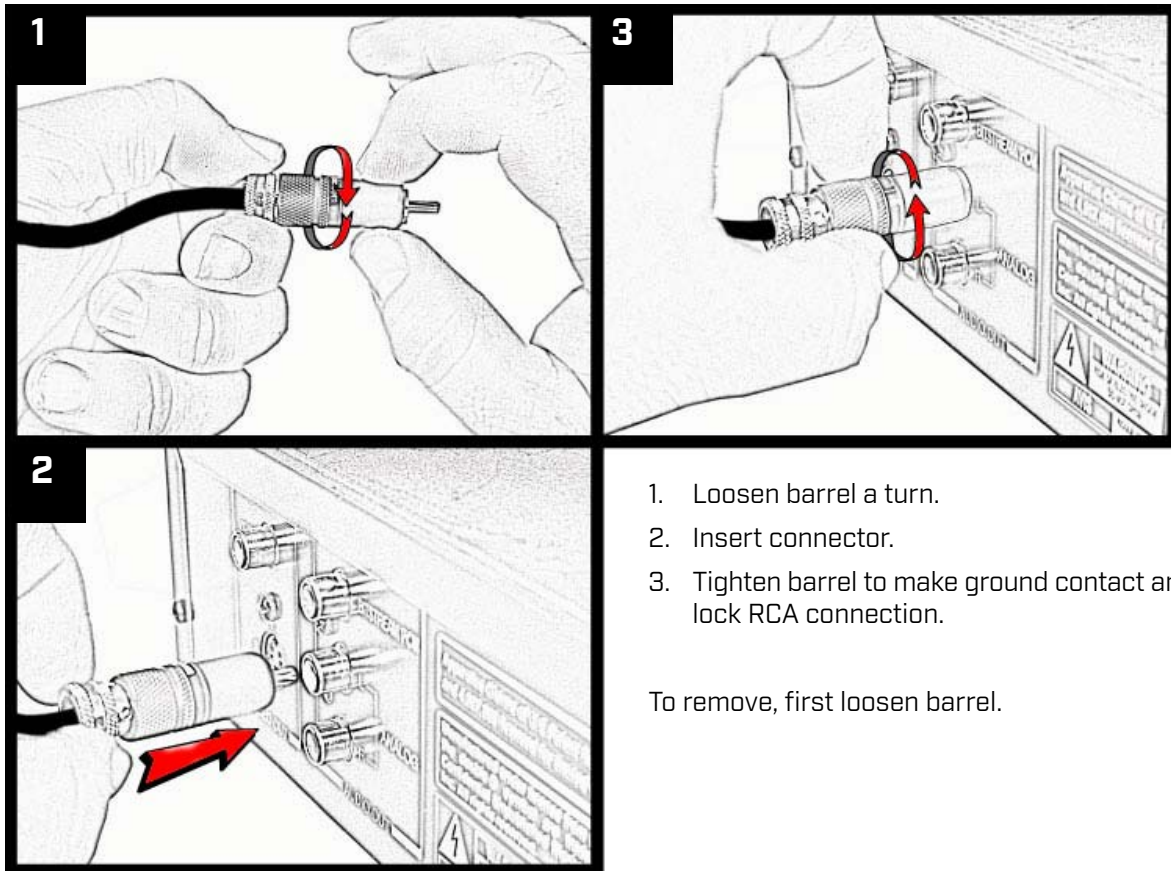
ZU AUDIO EVENT RCA Mk.II [REV-A] INTERCONNECT CABLE AD COPY + SPEC'S

## INSTALLATION NOTES

Switch power off prior to disconnecting/connecting cables.

If you touch the exposed contacts with oily or dirty hands you might want to buff them with a clean cotton or microfiber cloth and some cotton swabs to get into the tulip area (it takes a lot to get the tulip contact dirty). Keeping the contacts free of contaminants ensures trouble-free connections.

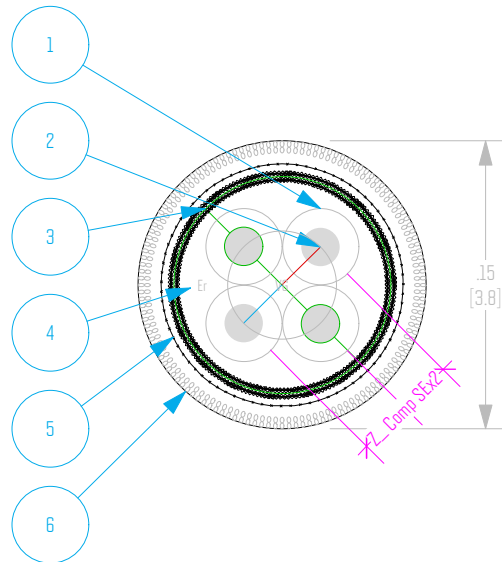
How to install WBT locking-type RCA connectors:





# EVENT RCA SPECIFICATIONS

ZU AUDIO EVENT RCA Mk.II [REV-A] INTERCONNECT CABLE AD COPY + SPEC'S



## Cross Section Detail

1. PTFE Teflon® insulation, virgin white [x4].
2. Silver wire, solid, 99.999 pure meta-crystal [x4].
3. Virtual ground complex.
4. Dielectric space: PTFE/Air/silver.
5. Silver plated copper screen.
6. Fine Dacron yarn braided sheath.





# EVENT RCA SPECIFICATIONS

ZU AUDIO EVENT RCA Mk.II [REV-A] INTERCONNECT CABLE AD COPY + SPEC'S

**Description** Zu Event RCA Mk.II is specifically designed for 2-channel stereo, line-level single-ended analog transmission. It combines Zu and W.L. Gore® stereo transmission technologies and marries them with cutting edge manufacturing and regulated shielding within a solid core pure silver PTFE Teflon® platform. The resulting interconnect is a dual signal single-ended quasi-balanced electrodynamic geometry for low electromagnetic interference susceptibility and near perfect left/right measures and behavior; all combine for a cable that is virtually immune to RF, very low in reactance, realizes lower playback system noise and stunning stereophony.

**Device Under Test** Zu Event RCA Mk.II 3.3' [1.0 m]  
**Connectors** WBT Nextgen™ RCA plugs, fully epoxy potted  
**Production** 2014-  
(Event Mk.I was in production from 2010-2014)

**Cable Format** 2-channel stereo within single RF cage with discrete channel leadouts

**Signal Conductor Metallurgy** U.S. refined, drawn and processed meta crystal 99.999% pure silver  
**Ground Conductor Metallurgy** U.S. refined, drawn and processed meta crystal 99.999% pure silver  
**RF Shielding & Metallurgy** high magnitude, silver plated copper braid + Zu/Gore® geometry

**Cable Geometry** Zu/Gore® two-channel single-ended transmission (shared dielectric space)  
**Signal Wire Geometry** solid  
**Ground Wire Geometry** solid  
**Insulators** virgin white PTFE Teflon® all  
**Dielectrics** PTFE/air/Ag  
**Shield** >95% high magnitude screen shorted at load side only

**Cable Sheath** Dacron fine yarn braid  
**Leadout Sheath** Dacron monofilament braid  
**Connector Metallurgy** pure copper with direct deposit gold plate, pin and ground  
**Connector Termination** silver bearing solder  
**Y-out Metallurgy & Makeup** 100% diamagnetic

**Directional** yes, direction arrows printed on both source and load y-out barrels  
**Crosstalk** nil, virtual ground plane prevents crosstalk  
**Bandwidth** DC - 1 GHz

**Rs Signal** 0.07  $\Omega$   
**Rs Ground** 0.07  $\Omega$   
**Cp** 94 pF

**Bend Radius** .75" [19 mm]  
**Cable Diameter** main cable 0.5" [12.7 mm]  
**Leadout Bend Radius** 1/2" [12.7 mm]  
**Leadout Cable Diameter** .15" [3.8 mm]  
**L / R Leadout Span** 12" [31 cm] standard, custom options available

**RCA Barrel Diameter** .54" [13.7 mm]  
**Tolerance** greater than 0.01% on all intra-channel measures  
**RoHS** compliant

**Design** Zu Audio & W.L. Gore®  
**Manufacturer** Zu Audio (Ogden, Utah)  
**Connector Manufacturer** WBT (Germany)  
**Manufacturers Country Of Origin** U.S.A. cable, labor and termination. Germany for connectors  
**Life Expectancy** 100 years+  
**Warranty & Service** limited lifetime, does not cover misuse or abuse



# EVENT RCA WARRANTY

ZU AUDIO EVENT RCA Mk.II [REV-A] INTERCONNECT CABLE AD COPY + SPEC'S

## WARRANTY

Zu products are designed and manufactured to the highest quality. However, if something does go wrong Zu will fix or replace the product free of charge. Zu Event RCA Mk.II interconnect cables have a limited lifetime warranty applicable to the original owner. If under normal home or studio use you have any problems with this cable we will fix or replace the product.

While every effort is made to ensure a perfect finish that will last a lifetime, this warranty does not cover damage from impact, abrasion or UV exposure. Zu products are designed to be used in temperature and humidity controlled environments, namely your home, studio or office unless otherwise stated.

If in the highly unlikely event that a Zu product arrives to you dead on arrival (D.O.A.), and after discussing it with a Zu tech, we will ship another of the same product at our expense and arrange for the D.O.A. product to be collected. If after inspection we find that you have misrepresented a returned product's condition, and that it was improperly handled or used, Zu will charge you for all damaged parts, labor, shipping and handling of the product.

Warranty does not apply to damage caused by operating the product outside the intended use, accident, damage caused by another product, misuse, abuse, flood, fire, earthquake or any other external causes. Warranty does not cover damage caused by modification or service performed by anyone other than a Zu representative.

When a product or part is exchanged the replacement becomes your property and the suspect or damaged part becomes Zu's property.

## WHAT YOU CAN EXPECT IF WARRANTY SERVICE IS NEEDED

If warranty becomes necessary, you must call or e-mail for a return of material authorization (R.M.A.) number. This provides opportunity to assist in diagnosing the problem and helps us to schedule for rapid turnaround in the event that parts, service or repair is needed. Upon factory inspection of parts or product, warranty eligibility will be determined. While service options, parts availability and response times will vary, we do our best to keep you happy. International customers should know that Zu will comply with all applicable export/import laws and regulations, you may be responsible for custom duties, taxes, broker fees, freight, and other charges. When shipping of product or part is required, repackage the complete product, or part, in its original packaging. If you have any questions about packaging please call or e-mail. Product damage caused from incorrect repackaging is not eligible for refund or warranty and the freight company may also reject your insurance claim. Until we have the product back in the shop and sign-off that it is eligible, the product is still your property, we recommend you insure or declare the full value when shipping. We also recommend that you only ship with a freight company that has a good reputation and offers tracking and insurance for the full amount.



**ZU AUDIO**

Ogden Commercial Industrial Park  
3350 S. 1500 W.  
OGDEN, UTAH — U.S.A.

[DESIGNED AND MADE BY US]