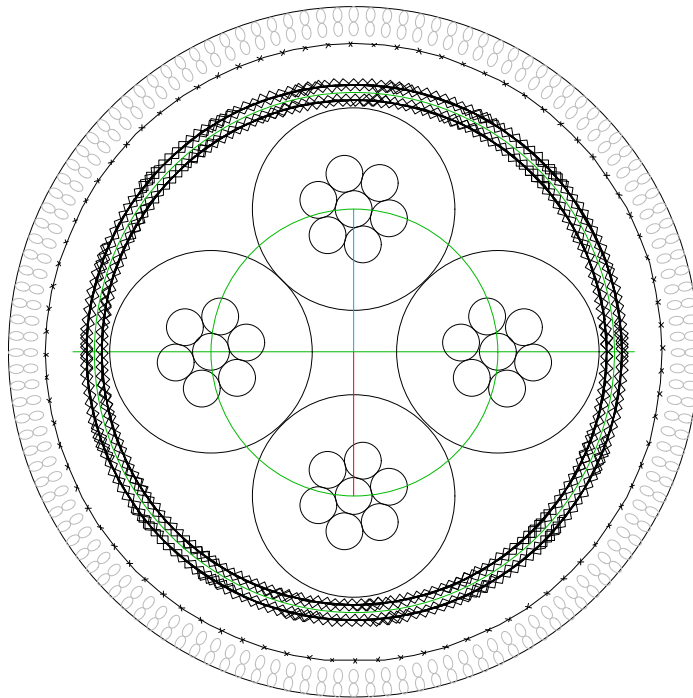


MISSION RCA

[Mk.II]



AD COPY + SPECIFICATIONS

1 | 2017



MISSION RCA PHOTOS

ZU AUDIO MISSION RCA Mk.II [REV-A&B] INTERCONNECT CABLE AD COPY + SPEC'S

MISSION RCA W/ SWITCHCRAFT RCA PLUGS



MISSION RCA W/ SWITCHCRAFT RCA PLUGS





MISSION RCA PHOTOS

ZU AUDIO MISSION RCA Mk.II [REV-A&B] INTERCONNECT CABLE AD COPY + SPEC'S

MISSION RCA W/ SWITCHCRAFT RCA PLUGS



MISSION RCA W/ SWITCHCRAFT RCA PLUGS





MISSION RCA PHOTOS

ZU AUDIO MISSION RCA Mk.II [REV-A&B] INTERCONNECT CABLE AD COPY + SPEC'S

MISSION RCA W/ WBT NEXTGEN RCA PLUGS



MISSION RCA W/ WBT NEXTGEN RCA PLUGS





MISSION RCA AD COPY/INFORMATION

ZU AUDIO MISSION RCA Mk.II [REV-A&B] INTERCONNECT CABLE AD COPY + SPEC'S

AD COPY

Zu Mission interconnect cables are all about maximum hi-fi value and are designed to challenge the state-of-the-art but at reasonable prices. Mission RCA Mk.II line-level single-ended analog interconnects will improve the sound of your system by lowering noise and improving top to bottom transient and tonal resolution, with the biggest area of improvement in stereophonic imaging. Few if any other cable will be as convincing as Zu Mission RCA Mk.II for stereophonic magic. Please read further for additional details and to know the specific differences between the SwitchCraft and WBT connector options.

Mission RCA Mk.II is specifically designed for two-channel stereo, line-level single-ended transmission and combines Zu and W.L. Gore® two-channel transmission technologies and marries it with cutting edge manufacturing and regulated shielding. The result is a two-channel stereo cable that is virtually immune to electromagnetic interferences.

Performance goals are realized through the correct application of Zu and Gore® cable technologies, which bond the 2-channel stereo circuits in the same dielectric space providing identical left/right signal conditions and performance, an advantage that is not possible with traditional white/red co-ax cables. Zu Mission also use innovative material technologies such as Teflon® (PTFE) dielectric and pure silver deposit over pure copper conductors.

Mission RCA are also very easy to work with; they are small, flexible, super durable and have a very comfortable hand.

Get pristine perfectly matched 2-channel stereo transmission in your stereo system, *get Mission*. Sceptical, and want to know for yourself? Great! Our 60-day satisfaction guarantee makes in-home trial dead easy—and we pay return shipping if for any reason you are not completely happy. If you have any questions please call or e-mail us: 800-516-8925 / info@ZuAudio.com.

CONNECTORS: SWITCHCRAFT® VS WBT® NEXTGEN™

SwitchCraft hollow-pin RCA plugs, while humbly priced sound fantastic and are built and terminated to last a lifetime. In keeping with the cool vintage look of this classic RCA plug, we custom color the right channel with epoxy based filler in the cross-hatch—way better looking than a cheap band of red shrink tube.

WBT nextgen™ plugs, we think these are a bit better sounding than the SwitchCraft, but the price of these plugs is significant—the best is usually worth it. Undecided? Get both and compare for yourself, our 60-day satisfaction guaranty is quite liberal, we want you happy and we want you to get the most from your system and your hard earned money.

WBT nextgen RCA plugs contribute to the Mission Mk.II's performance largely from reducing contact resistance. Signal and ground contacts are made from pure copper and not turned from brass. Further, to ensure the lowest possible contact resistance, WBT fabricates the pure copper contacts from a single plate. This single piece pure material methodology yields better contact measures and lower noise, improving detail without any spectral imbalances or treble forwardness. Contacts are direct gold plated to ensure a lifetime of high fidelity contact performance. Also, the bulk of the dielectric material used



MISSION RCA AD COPY/INFORMATION

ZU AUDIO MISSION RCA Mk.II [REV-A&B] INTERCONNECT CABLE AD COPY + SPEC'S

in supporting the contacts is Teflon for the lowest possible signal loss through the plug section of the connector interface. The connector, like all WBT designs, is extremely well engineered and designed to last. And combined with our precision, equally well engineered termination and full epoxy/graphite matrix potting the connector and connector/cable termination perform even better and will last your lifetime without giving you a single problem.

We have tried about every top-level RCA on the market for fitment on the new Mission Mk.II (including making several of our own) and the WBT nextgen has stood out as the most natural sounding. Added to the termination of the WBT nextgen RCA is a external rubber strain relief, a detail that safeguards the lead-in cable from excessive bend radius and breakage and allows for full potting of the connector housing assembly.

QUICK FEATURES

- Your choice of connectors to maximize your performance to cash relationship.
- SwitchCraft classic hollow-pin RCA for next to best sound while saving a ton of cash and getting a sweet vintage looking cable (and no locking barrels to fuss with).
- WBT nextgen™ 0114 copper RCA plugs for as good as it gets termination of Mission Mk.II cable and interconnection of your audio gear.
- Epoxy potting hermetically seals the termination of wire and connector and improves ESD performance and reduces the unavoidable EM reflections lowering the standing-wave ratio (SWR).
- Zu/Gore®-Quad shared dielectric dual signal bonded cable geometry for low electromagnetic interference susceptibility and guaranteed near perfect left/right measures and behavior. This ensures the highest level of stereophonic realism.
- Dense electric and magnetic signature, as well as the cables physical dimensions, further guard against RF and noise and allows for small and easy handling.
- The very low, uniform and square reactance of Mission RCA Mk.II facilitates very long runs without bandwidth loss or phase issues.
- Uniform impedance characteristics of Mission RCA Mk.II reduce standing waves and contribute to the stable propagation of intelligence in short or long runs.
- Zu Mission RCA has no DC offset like in coax designs and features perfect symmetry between left and right channels. As mentioned, this identical relationship between channels guarantees the highest possible recreation of dimension, stereo, density and tone.
- Pure silver over pure copper, perfect lay conductors for both signal and return.
- Virgin white Teflon® insulation with identical electrodynamic relationships help lower the net dielectric constant; Teflon® also has a very low dissipation factor—both features improve bandwidth, phase relations and overall musical resolution.
- Made by us in Ogden, Utah so every product gets serious attention and love.



MISSION RCA AD COPY/INFORMATION

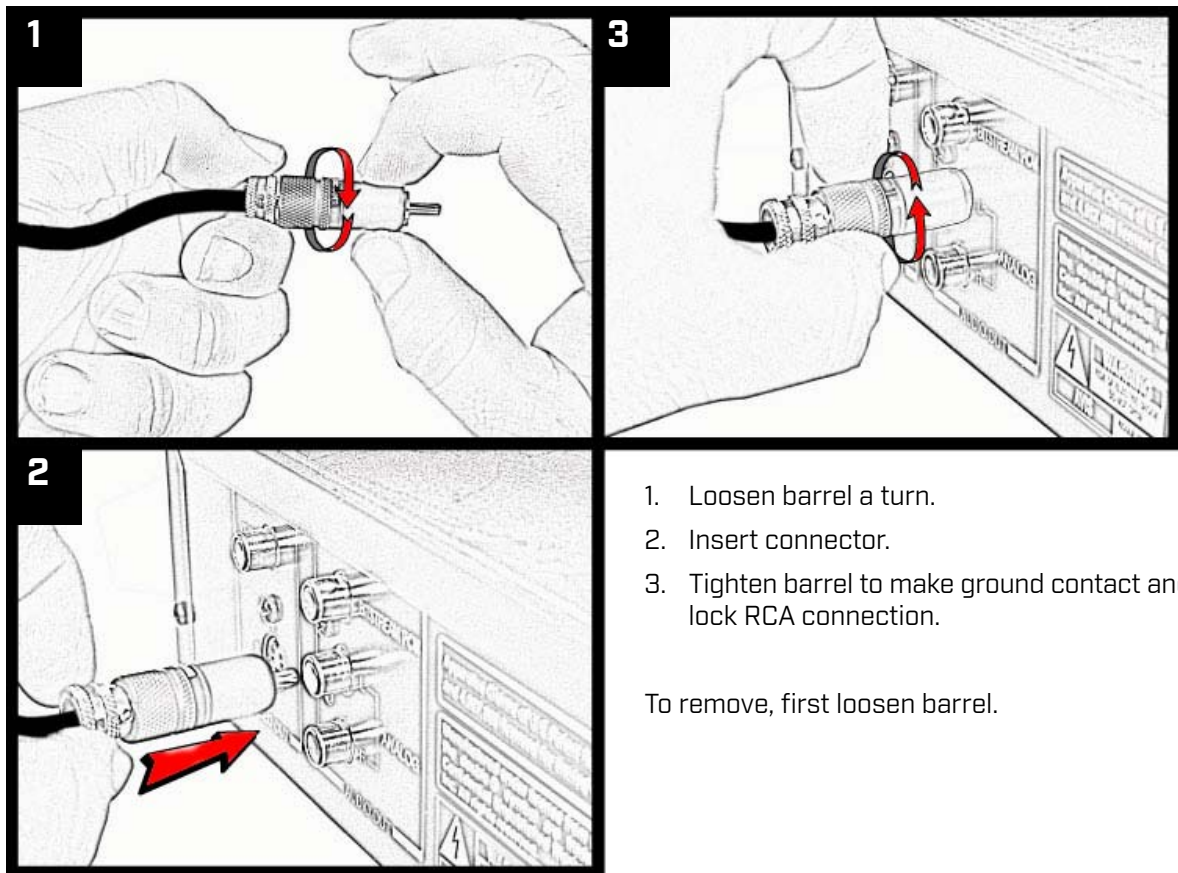
ZU AUDIO MISSION RCA Mk.II [REV-A&B] INTERCONNECT CABLE AD COPY + SPEC'S

INSTALLATION NOTES

Switch power off prior to disconnecting/connecting cables.

If you touch the exposed contacts with oily or dirty hands you might want to buff them with a clean cotton or microfiber cloth and some cotton swabs to get into the tulip area (it takes a lot to get the tulip contact dirty). Keeping the contacts free of contaminants ensures trouble-free connections.

How to install WBT locking-type RCA connectors:





MISSION RCA AD COPY/INFORMATION

ZU AUDIO MISSION RCA Mk.II [REV-A&B] INTERCONNECT CABLE AD COPY + SPEC'S

MAINTENANCE

No maintenance is required for the Mission RCA cable or its connectors. However, anytime you are making an electrical connection make it a habit to inspect the contacts and clean them if they are tarnished or dirty, Cape Cod™ polish is one of our favorites.

BURN-IN

Mission RCA interconnect cable requires a good bit of play before complete burn-in is reached, roughly 400 hours—lots of Teflon® equals slow burn-in. We do not recommend any burn-in devices or special recordings. We do recommend music you enjoy, preferably upbeat full spectrum recordings: rock, roots, full orchestra, big band.... For the possible how and whys about burn-in please see our Answers section within www.ZuAudio.com.



[DESIGNED AND MADE BY US]

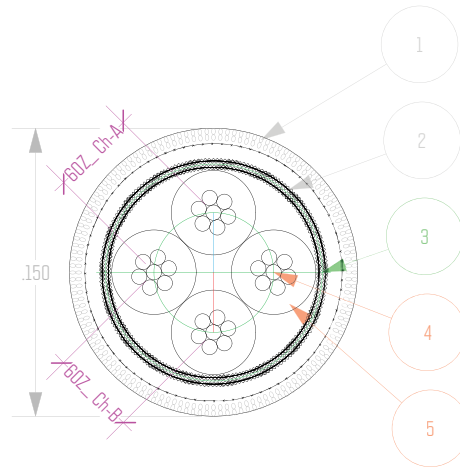
ZU AUDIO | 3350 S. 1500 W. | OGDEN, UTAH — U.S.A | 800-516-8925





MISSION RCA SPECIFICATIONS

ZU AUDIO MISSION RCA Mk.II [REV-A&B] INTERCONNECT CABLE AD COPY + SPEC'S



1. Fine braided Nylon sheath.
2. High conductance tin/copper ground + shield.
3. 100%+ B&E field containment/dielectric perimeter & ground plane complex.
4. Primary conductors, heavy silver over copper perfect lay [x2 channels].
5. Teflon® PTFE insulator virgin white [x2 channels].



MISSION RCA SPECIFICATIONS

ZU AUDIO MISSION RCA Mk.II [REV-A&B] INTERCONNECT CABLE AD COPY + SPEC'S

Description Zu Mission Mk.II combines combines Zu and W.L. Gore® stereo transmission technologies and marries it with cutting edge manufacturing and regulated shielding within copper / silver skin / PTFE platform. The result is a 2-channel signal transmission that is virtually immune to RF and realizes less noise from your system than other cables. Zu Mission RCA Mk.II is specifically designed for 2-channel stereo, line-level single-ended analog transmission.

Device Under Test Zu Mission RCA Mk.II 1.0 m
Connectors WBT-0114 Nextgen™ RCA plugs, fully epoxy potted
Production 2013—
Cable Format 2-channel stereo within single RF cage with discrete channel leadouts

Signal Conductor Metallurgy pure U.S. refined, drawn and processed copper with direct deposit pure silver skins
Ground Conductor Metallurgy pure U.S. refined, drawn and processed copper with direct deposit pure silver skins

Cable Geometry Zu/Gore® two-channel single-ended transmission (shared dielectric space)
Signal Wire Geometry low strand count, perfect lay
Ground Wire Geometry low strand count, perfect lay
Dielectrics virgin white PTFE Teflon® all circuits
Shield 95% high magnitude braid screen is floating at source end of cable and terminated/shorted at load

Cable Sheath Nylon
Leadout Sheath Dacron
Connector Metallurgy pure copper with direct deposit gold plate, pin and ground
Connector Termination silver bearing solder or crimp
Y-out Metallurgy & Makeup 100% diamagnetic

Directional yes, direction arrows printed on both y-out barrels
Crosstalk nil, channels are divided by ground complex
RF Shielding high magnitude, tinned copper braid + Zu/Gore® geometry
Bandwidth DC - 1 GHz
Z₀ 60 Ω

Rs Signal 0.06 Ω
Rs Ground 0.06 Ω

Cp pin / shield 128 pF
Cp Signal ch. 1 / Ground ch. 2 128 pF
Cp ch. 1 / ch. 2 45 pF

Bend Radius .75" [19 mm]
Cable Diameter main cable 0.165" [4.2 mm]
Leadout Bend Radius 1/2" [12.7 mm]
Leadout Cable Diameter .15" [3.8 mm]
L / R Leadout Span 12" [31 cm] standard, custom options available

RCA Barrel Diameter .54" [13.7 mm]
Tolerance greater than 0.01% on all intra-channel measures
Weight 3.63 oz [103 g]
RoHS compliant

Design Zu Audio & W.L. Gore®
Manufacturer Zu Audio / Ogden, Utah
Manufacturers Country Of Origin U.S.A. cable, labor and termination
Connector Manufacturer WBT = Germany, SwitchCraft = Mexico

Life Expectancy 100 years+
Warranty & Service limited lifetime, does not cover misuse or abuse



MISSION RCA WARRANTY

ZU AUDIO MISSION RCA Mk.II [REV-A&B] INTERCONNECT CABLE AD COPY + SPEC'S

WARRANTY

Zu products are designed and manufactured to the highest quality. However, if something does go wrong Zu will fix or replace the product free of charge. Zu Mission RCA interconnect cables have a limited lifetime warranty applicable to the original owner. If under normal home or studio use you have any problems with this cable we will fix or replace the product.

While every effort is made to ensure a perfect finish that will last a lifetime, this warranty does not cover damage from impact, abrasion or UV exposure. Zu products are designed to be used in temperature and humidity controlled environments, namely your home, studio or office unless otherwise stated.

If in the highly unlikely event that a Zu product arrives to you dead on arrival (D.O.A.), and after discussing it with a Zu tech, we will ship another of the same product at our expense and arrange for the D.O.A. product to be collected. If after inspection we find that you have misrepresented a returned product's condition, and that it was improperly handled or used, Zu will charge you for all damaged parts, labor, shipping and handling of the product.

Warranty does not apply to damage caused by operating the product outside the intended use, accident, damage caused by another product, misuse, abuse, flood, fire, earthquake or any other external causes. Warranty does not cover damage caused by modification or service performed by anyone other than a Zu representative.

When a product or part is exchanged the replacement becomes your property and the suspect or damaged part becomes Zu's property.

WHAT YOU CAN EXPECT IF WARRANTY SERVICE IS NEEDED

If warranty becomes necessary, you must call or e-mail for a return of material authorization (R.M.A.) number. This provides opportunity to assist in diagnosing the problem and helps us to schedule for rapid turnaround in the event that parts, service or repair is needed. Upon factory inspection of parts or product, warranty eligibility will be determined. While service options, parts availability and response times will vary, we do our best to keep you happy. International customers should know that Zu will comply with all applicable export/import laws and regulations, you may be responsible for custom duties, taxes, broker fees, freight, and other charges. When shipping of product or part is required, repackage the complete product, or part, in its original packaging. If you have any questions about packaging please call or e-mail. Product damage caused from incorrect repackaging is not eligible for refund or warranty and the freight company may also reject your insurance claim. Until we have the product back in the shop and sign-off that it is eligible, the product is still your property, we recommend you insure or declare the full value when shipping. We also recommend that you only ship with a freight company that has a good reputation and offers tracking and insurance for the full amount.



ZU AUDIO

Ogden Commercial Industrial Park
3350 S. 1500 W.
OGDEN, UTAH — U.S.A.

[DESIGNED AND MADE BY US]